



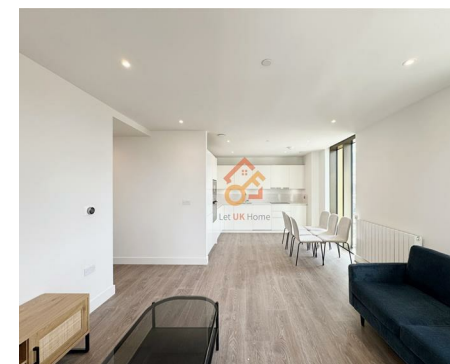
Let **UK** Home

**3 Bedrooms**

**Flat**

**Located in London**

**£3,700 Per Month**



[info@letukhome.co.uk](mailto:info@letukhome.co.uk)

<https://www.letukhome.co.uk/>

01795 358 886



# 1 Affinity View London

E16 4EE



Let UK Home are excited to present this stunning three bedrooms apartment in the heart of Menera Point, part of the highly anticipated Twelve Trees Park development, E15.

This property comprises a large bright open plan kitchen and living room, three double bedrooms (two with wardrobes and enSuites), a large modern bathroom and ample storage. A virtual viewing is provided.

Residents will enjoy a range of premium amenities, including a concierge, a business lounge, multiple co-working spaces, open pod meeting areas, a private meeting room, a residents' lobby, a screening room, and a state-of-the-art gym.

West Ham station is just moments away, offering quick access to central London via the District, Hammersmith & City, and Jubilee lines, as well as the DLR and c2c services.

Taking the tube allows quick commuting to University College London (UCL), London School of Economics (LSE), and King's College London (KCL).

Residents can take the tube to Stratford, a bustling shopping and leisure center. Stratford was the venue for the 2012 London Olympics — the Queen Elizabeth Olympic Park is also located here, so Stratford is also known as the Olympic New Town. Stratford is also home to the famous shopping mall Westfield. Westfield Stratford is one of the largest urban shopping and leisure centers in Europe, featuring many high street fashion, home, and lifestyle brand stores, multiple shops, restaurants, a multiplex cinema, a bowling alley, and a 24-hour casino.

# 1 Affinity View London

£3,700 Per Month

- 9th Floor
- 24h Security
- Cinema & Game Room
- Co-working Space
- EPC Rating: B
- Concierge Service
- The Gym
- Residential Lounge
- Virtual Viewing Available



## Three Bedroom Apartment



Total Area	94.6 sq m	1,018 sq ft
Kitchen	3.58m x 3.14m	11'8" x 10'2"
Living/Dining	3.96m x 4.13m	12'11" x 13'6"
Bedroom 1	3.28m x 3.21m	10'9" x 10'6"
Bedroom 2	2.75m x 4.71m	9'0" x 15'5"
Bedroom 3	2.75m x 3.00m	9'0" x 9'10"



Let **UK** Home

3F 2 Eastbourne Terrace  
Paddington  
London  
W2 6LG

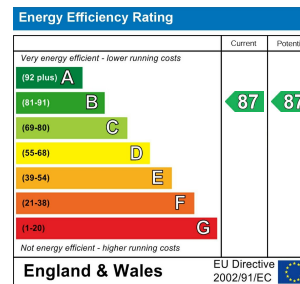
01795 358 886

info@letukhome.co.uk

**Council Tax Band: E**

**Local Authority:**

Agents Note: Whilst every care has been taken to prepare these particulars, they are for guidance purposes only. All measurements are approximate and are for general guidance purposes only and whilst every care has been taken to ensure their accuracy, they should not be relied upon and potential buyers/tenants are advised to recheck the measurements.



<https://www.letukhome.co.uk/>